

THAMES
FOYER



Traditional Afternoon Tea



A Selection of Traditional Sandwiches

Finger Sandwiches

English Cucumber | Minted Goat's Cheese | Juniper Berry Bread
Chicken Coronation | Carrot & Coriander Bread
Free Range Egg Salad | Wholegrain Mustard Mayonnaise | White Bread
Brown Shrimps | Beetroot Remoulade | Multigrain Bread

Open Sandwiches

Oak Smoked Salmon | Chive Cream Cheese | Fennel Pollen | Lemon Brioche
Butternut Squash | Honey & Cumin | Applewood | Tart



Traditional Afternoon Tea



Seasonal Handmade Afternoon Tea Pastries & Savoy Signature Cakes

Citrus

Amalfi Lemon | Caramelised Meringue | Shortbread Biscuit

Cube

Piedmont Hazelnut Cake | Gianduja Cremeux | Milk Chocolate Coating

Tropical

Mango & Passion Fruit Jelly | Banana Crème

Fruit Tartlet

Inspired by the season

Madeleine

Iranian Pistachio Praline

Tea Cake

Earl Grey Tea | Bergamot curd

Plain & Raisin Scones

Cornish Clotted Cream | Homemade Lemon Curd | Strawberry Jam



Traditional Afternoon Tea 75.00

With a glass of Louis Roederer Brut Premier, NV 85.00

With a glass of Deutz Rosé, NV 95.00

Additional glass of Louis Roederer Brut Premier, NV 15.00

Additional glass of Deutz Rosé, NV 21.00

Traditional High Tea



A Selection of Traditional Sandwiches

Finger Sandwiches

English Cucumber | Minted Goat's Cheese | Juniper Berry Bread
Chicken Coronation | Carrot & Coriander Bread
Free Range Egg Salad | Wholegrain Mustard Mayonnaise | White Bread
Brown Shrimps | Beetroot Remoulade | Multigrain Bread

Open Face

Oak Smoked Salmon | Chive Cream Cheese | Fennel Pollen | Lemon Brioche
Butternut Squash | Honey & Cumin | Applewood | Tart



Slow Cooked Quail Breast

Girolles | Cep Powder | Pomegranate Seeds

Traditional High Tea



Savoy Signature Cakes

Cube

Piedmont Hazelnut Cake | Gianduja Cremeux | Milk Chocolate Coating

Tea Cake

Earl Grey Tea | Bergamot Curd

Plain & Raisin Scones

Cornish Clotted Cream | Homemade Lemon Curd | Strawberry Jam



Traditional High Tea 75.00

With a glass of Louis Roederer Brut Premier, NV 85.00

With a glass of Deutz Rosé, NV 95.00

Additional glass of Louis Roederer Brut Premier, NV 15.00

Additional glass of Deutz Rosé, NV 21.00

THE SAVOY & JING EXCLUSIVE DARJEELING COLLECTION



On a quest to find the ultimate tea for Afternoon Tea, The Savoy & JING Tea journeyed to the misty foothills of the Himalayas to Darjeeling – famed producer of ‘The champagne of teas’.

The unique terroir and craftsmanship of Darjeeling produces teas with a distinctive character and inherent quality that cannot be replicated anywhere else in the world.

Inspired by the sheer variety of flavours within Darjeeling teas, The Savoy are showcasing definitive examples of three distinctive styles - taking you on the journey to experience the best of this treasured origin.

Organic Darjeeling 1st Flush

Garden: Seeyok

JING Excellence at Origin
competition winner

Fragrant | Sweet | Reviving

The highly-prized first pickings of the year; capturing all the freshness of Spring. This crisp black tea is supremely fragrant, honeyed and floral with a brisk finish.

Darjeeling Moonlight

Garden: Margaret's Hope

Exclusively at The Savoy

Aromatic | Syrupy | Complex

A recent innovation from the hills of Darjeeling, this Moonlight tea has been cultivated to accentuate high florality and syrupy sweetness, with a smooth rounded body. Complex and intriguing, a new taste experience for most.

Darjeeling 2nd Flush

Garden: Castleton

Exclusively at The Savoy

Warm | Sweet | Balanced

An excellent example of a classic Darjeeling Afternoon Tea. Warm and comforting with dried fruit notes masterfully extracted in the firing of the leaves, showcasing the true craftsmanship of this famed tea garden. Once tasted at origin this tea was immediately secured for The Savoy.

THE SAVOY TEA SELECTION

BLACK TEA

The Savoy Breakfast Tea

India - Statuesque & full-bodied tea blend from Assam & Darjeeling with plenty of structure & malty richness. A rousing breakfast style tea, perfect with milk.

The Savoy Afternoon Tea

India - Balanced blend of black teas delivering a malty fragrance, a light astringency, followed by a refreshing sweet finish.

Decaffeinated Ceylon

Sri Lanka - Rich & layered Ceylon character, full-bodied whilst smooth & refreshing.

Red Dragon

Yunnan, China - Rich & syrupy black tea, with caramel & chocolate, plum & black cherry.

Earl Grey

Sri Lanka - Refreshing & bright, with citrus freshness lifting the rich Ceylon tea base.

Vanilla Black

Sri Lanka - Creamy & sweet vanilla over a full-bodied black tea base.

GREEN TEA

Jade Sword	Hunan, China - Full & grassy organic green tea with a sappy & refreshing finish.
Dragon Well	Zhejiang, China (seasonal) - Lively flavours in which grassy freshness is underscored by sweet & soft hazel complexities. China's most celebrated green tea.
Genmaicha	Japan - Sweet with barley notes & depths of mellow umami.
Gyokuro	Japan - A Japanese green tea: thick, grassy & rich with umami.

OO LONG TEA

Yellow Gold	China - Smooth & biscuity sweet oolong tea with grassy freshness & citrus notes.
Oriental Beauty	Taiwan - Complex & aromatic with harmonious notes of apple, ripe pineapple & fragrant cedar wood.
Phoenix Honey Orchid	Guangdong, China - Deliciously fruity & floral oolong tea, with pleasing roasted richness & a touch of astringency.
Wuyi Oolong	Fujian, China - Rich, buttery oolong tea lifted by caramel sweetness & subtle floral notes.

WHITE TEA

White Peony

Fujian, China - Delightfully refreshing, rounded & full-flavoured, with sweet & fragrant notes of melon.

Jasmine Silver Needle

Fujian, China - Delicate flavours in which light orchard-blossom sweetness combines with fragrant jasmine to create a soft, vanilla effect.

PUERH TEA

Vintage Imperial Puerh

Yunnan, China - Deeply mellow & fragrant, hints of chocolate & incense woods with a fruity finish.

FRUITY & FLORAL PREMIUM INFUSIONS

Raspberry & Rose

A delicate yet fruity infusion of raspberry, rosebuds, rosehip & bright osmanthus.

Pineapple & Osmanthus

A highly fragrant infusion of sweet pineapple, osmanthus & chamomile flowers.

Strawberry & Rooibos

A rich & rounded infusion of mellow rooibos, sweet strawberry & elderflower fragrance.

Green Apple & Hibiscus

Pieces of apple, lemongrass & hibiscus: a bright, crisp & refreshing infusion.

FLOWERING TEA

Flowering Jasmine & Lily

Fujian, China - A broad base of green tea buds topped with a crown of orange lily-petals & a tower of jasmine flowers.

HERBAL INFUSIONS

Rooibos

South Africa - Gently tangy notes of Seville orange combine with soft-textured hints of vanilla.

Whole Rosebuds

Morocco - Beautiful & graceful, notes of sweet rose with a refreshingly light & palate-cleansing finish.

Whole Lemon Verbena

Paraguay - Fresh, vivid with mint-like freshness & pressed lemon zest pungency.

Whole Peppermint Leaf

Germany - Insistent, deep, grippy mint flavours with an almost oily mid-palate, subsiding cleanly towards an intense finish.

All prices are inclusive VAT. A suggested discretionary 12.5% service charge will be added to your bill. Please let your server know of any food allergies &/or special dietary requirements.

We are happy to provide you with all food allergen, product and nutritional information.

A Time for Reflection

The eight paintings hanging in the Thames Foyer are by British Pop artist McAlpine Miller.

Each painting features a star of the stage or screen who enjoyed staying here at The Savoy.



Katharine Hepburn:
Taking Centre Stage



Frank Sinatra:
Man About Town



Ava Gardner:
A Desirable Proposition



Maria Callas:
A Moment of Respite



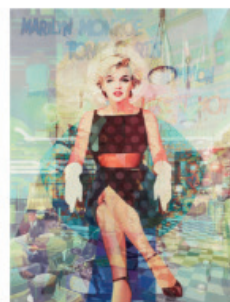
Charlie Chaplin:
Silent Path to Success



Marlene Dietrich:
Into My World



Alfred Hitchcock:
The Mysterious Thinker



Marilyn Monroe:
Bright Young Thing

“This series of 8 paintings concentrates on two themes: the sheer majesty of The Savoy and the glamour of iconic idols that have been and will continue to be associated with this historic hotel. The choice of subjects serves not only to remind us of an era of great hope and aspiration but also allow us to consider both progress and potential. The Savoy has continued to achieve a standard which might otherwise be lost in our throwaway society where everything is replaceable”.

McAlpine Miller, 2012

All of the paintings are oil on linen canvas. The collection was commissioned by The Savoy in 2012.